

THIS IS NOT A

INSTR # 2001058292

OR BK 10630 PG 0971

RECORDED 02/23/2001 03:10 PM
RICHARD AKE CLERK OF COURT
HILLSBOROUGH COUNTY
DEPUTY CLERK B King

✓ Prepared By and To Be Returned To
ROBERT S. FREEDMAN, ESQUIRE
CARLTON, FIELDS, WARD, EMMANUEL,
SMITH & CUTLER, P A
Post Office Box 3239
Tampa, Florida 33601-3239

TWELVTH SUPPLEMENT TO DECLARATION OF CONDOMINIUM FOR EAGLE GREENS CONDOMINIUM

WHEREAS, the Declaration of Condominium for Eagle Greens Condominium was recorded on July 9, 1999, in Official Records Book 9718, Page 666, and which references the condominium drawings recorded in Condominium Book 17, Page 69, all of the public records of Hillsborough County, Florida ("Original Declaration"), and

WHEREAS, the First Amendment to the Original Declaration was recorded on November 12, 1999, in Official Records Book 9916, Page 1736, public records of Hillsborough County, Florida ("First Amendment"), and

WHEREAS, the Original Declaration and the First Amendment collectively constitute the "Declaration," and

WHEREAS, the First Supplement to the Declaration was recorded on November 29, 1999, in Official Records Book 9937, Page 1548, and which references the Condominium drawings recorded in Condominium Book 17, Page 87, all of the public records of Hillsborough County, Florida, and

WHEREAS, the Second Supplement to the Declaration was recorded on December 17, 1999, in Official Records Book 9968, Page 251, and which references the Condominium drawings recorded in Condominium Book 17, Page 94, all of the public records of Hillsborough County, Florida, and

WHEREAS, the Third Supplement to the Declaration was recorded on December 22, 1999, in Official Records Book 9975, Page 1950, and which references the Condominium drawings recorded in Condominium Book 17, Page 95, all of the public records of Hillsborough County, Florida, and

WHEREAS, the Fourth Supplement to the Declaration was recorded on January 4, 2000, in Official Records Book 9995, Page 1266, and which references the Condominium drawings recorded in Condominium Book 18, Page 1, all of the public records of Hillsborough County, Florida, and

WHEREAS, the Fifth Supplement to the Declaration was recorded on January 24, 2000, in Official Records Book 10019, Page 47, and which references the Condominium drawings recorded in Condominium Book 18, Page 4, all of the public records of Hillsborough County, Florida, and

WHEREAS, the Sixth Supplement to the Declaration was recorded on March 31, 2000, in Official Records Book 10114, Page 1122, and which references the Condominium drawings recorded in Condominium Book 18, Page 9, all of the public records of Hillsborough County, Florida, and

WHEREAS, the Seventh Supplement to the Declaration was recorded on April 28, 2000, in Official Records Book 10159, Page 1070, and which references the Condominium drawings recorded in Condominium Book 18, Page 12, all of the public records of Hillsborough County, Florida, and

WHEREAS, the Eighth Supplement to the Declaration was recorded on May 11, 2000, in Official Records Book 10180, Page 1290, and which references the Condominium drawings recorded in Condominium Book 18, Page 15, all of the public records of Hillsborough County, Florida, and

WHEREAS, the Ninth Supplement to the Declaration was recorded on August 21, 2000, in Official Records Book 10334, Page 119, and which references the Condominium drawings recorded in Condominium Book 18, Page 23, all of the public records of Hillsborough County, Florida, and

WHEREAS, the Tenth Supplement to the Declaration was recorded on November 27, 2000, in Official Records Book 10483, Page 1743, and which references the Condominium drawings recorded in Condominium Book 18, Page 34, all of the public records of Hillsborough County, Florida, and

WHEREAS, the Eleventh Supplement to the Declaration was recorded on January 8, 2001, in Official Records Book 10551, Page 554, and which references the Condominium drawings recorded in Condominium Book 18, Page 38, all of the public records of Hillsborough County, Florida, and

WHEREAS, there are unit(s) of Eagle Greens Condominium which are now substantially complete and which are ready for conveyancing pursuant to Section 718 104(4)(e), Florida Statutes,

NOW, THEREFORE, the Declaration is hereby further amended by the condominium drawings recorded in Condominium Book 18 Page 42, of the public records of Hillsborough County, Florida, of which a reduced-in-size copy is attached hereto as Exhibit 1 and incorporated herein by reference

IN WITNESS WHEREOF, this instrument was executed by the undersigned this 8th day of January, 2001

WITNESSES:

WCI COMMUNITIES, INC., a Delaware corporation, f/k/a Florida Design Communities, Inc., as Developer of Eagle Greens Condominium

Name Mary S. Cook
Print Name Mary S. Cook

By Stephen C. Pierce
Stephen C. Pierce, Vice President

Name Paula Bidwell
Print Name Paula Bidwell

(SEAL)

STATE OF FLORIDA
COUNTY OF LEE

The foregoing instrument was acknowledged before me this 8th day of January, 2001, by Stephen C. Pierce, as Vice President of WCI COMMUNITIES, INC., a Delaware corporation, formerly known as Florida Design Communities, Inc., on behalf of the corporation, as Developer of Eagle Greens Condominium. He is personally known to me.

My Commission Expires 3/6/04

(AFFIX NOTARY SEAL)

CC 916338

(Commission Number, if any)

Mary S. Cook
(Signature)
Name Mary S. Cook
(Legibly Printed)
Notary Public, State of Florida



Mary S. Cook
Commission # CC 916338
Expires March 6, 2004
Bonded Thru
Atlantic Bonding Co., Inc.

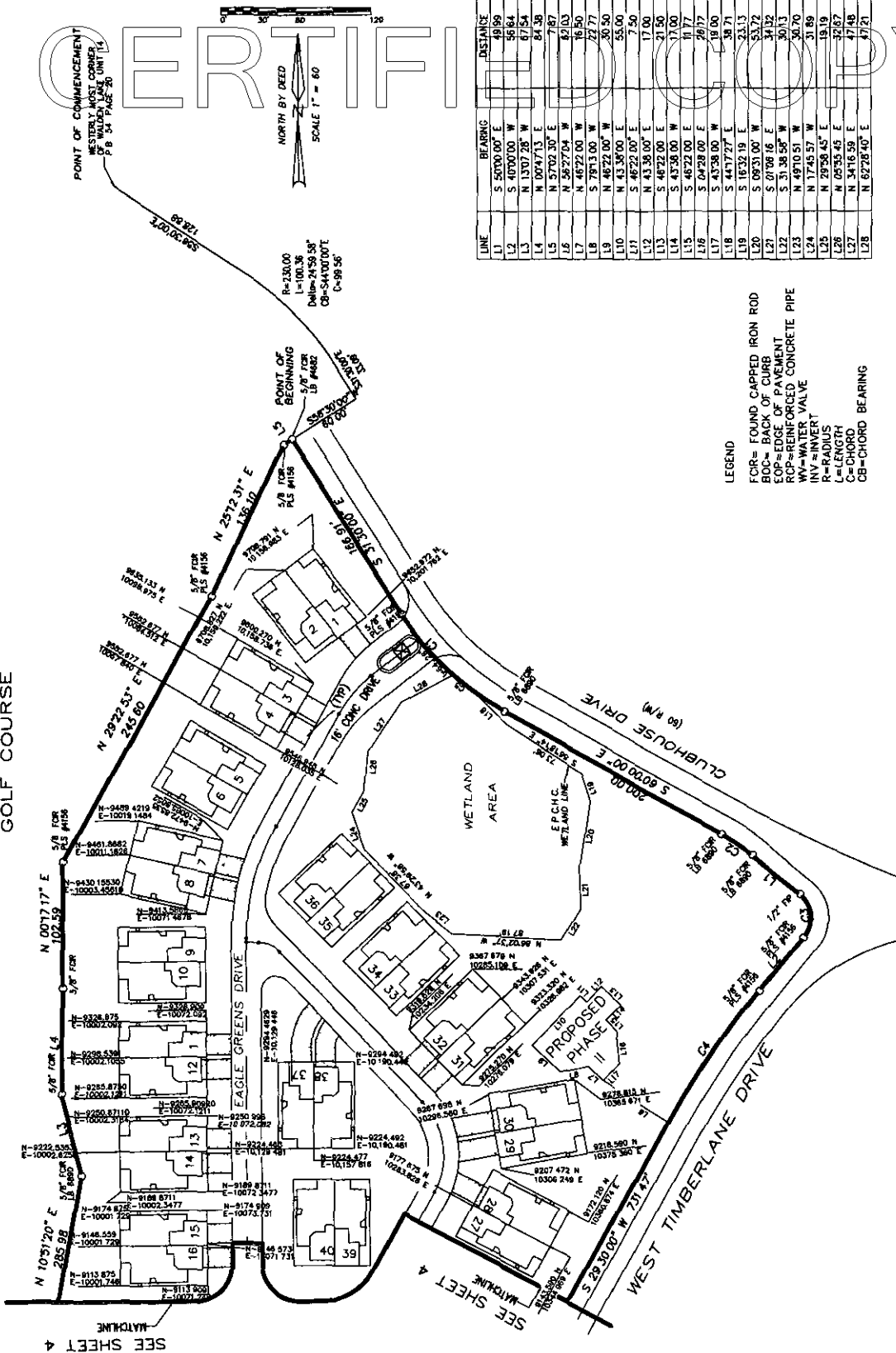
THIS IS NOT A
CERTIFIED COPY

C.B. PG
SHEET 1 OF 1

EAGLE GREENS CONDOMINIUM PHASE I

SECTION 6 TOWNSHIP 29 SOUTH RANGE 22 EAST, HILLSBOROUGH COUNTY, FLORIDA

GOLF COURSE



DAVID EVANS
AND ASSOCIATES, INC.
4025 Tampa Road Suite 1203
Oldsmar Florida 34677 (813) 814 1884

NOTES
BEARINGS BASED ON THE DEED BEARING OF N29 30 00"E FOR THE WESTERLY
RIGHT OF WAY LINE OF WEST TIMBERLANE DRIVE

CURVE	ARC	DELTA	RADIUS	CHORD LENGTH	CHORD BEARING
C1	114.41	28°30'00"	230.00	113.23	S 45°45'00" E
C2	29.67	10°00'00"	170.00	29.63	S 55°00'00" E
C3	39.27	9°00'00"	25.00	35.36	S 05°00'00" E
C4	128.28	10°29'58"	700.00	126.10	S 34°44'59" W
C5	18.82	04°41'21"	230.00	18.82	S 49°51'10" E

SURVEYOR'S CERTIFICATE
I HEREBY CERTIFY THAT THE CONSTRUCTION OF UNIT 7
AND COMMON ELEMENTS, INCLUDING, BUT NOT LIMITED TO
LANDSCAPING, UTILITY SERVICES, AND ACCESS TO SAID UNIT 7
AND COMMON ELEMENTS AREAS SERVING SAID UNIT 7
ARE SUBSTANTIALLY COMPLETE, AND THAT THIS PLAN OF EAGLE GREENS,
A CONDOMINIUM CONSISTING OF SHEETS 1 THRU 5, TOGETHER WITH THE
DECLARATION OF CONDOMINIUM IS IN SUFFICIENT DETAIL TO IDENTIFY
SAID COMMON ELEMENTS AND EACH UNIT AND THEIR RELATIVE LOCATIONS
AND APPROXIMATE DIMENSIONS
ADVANTAGE SURVEYING, INC.
DATE 02/21/01

Ronald Thompson
RONALD THOMPSON, REGISTERED FLORIDA LAND SURVEYOR
NO. 4580